

Salina USD 305 Quick Facts 2019

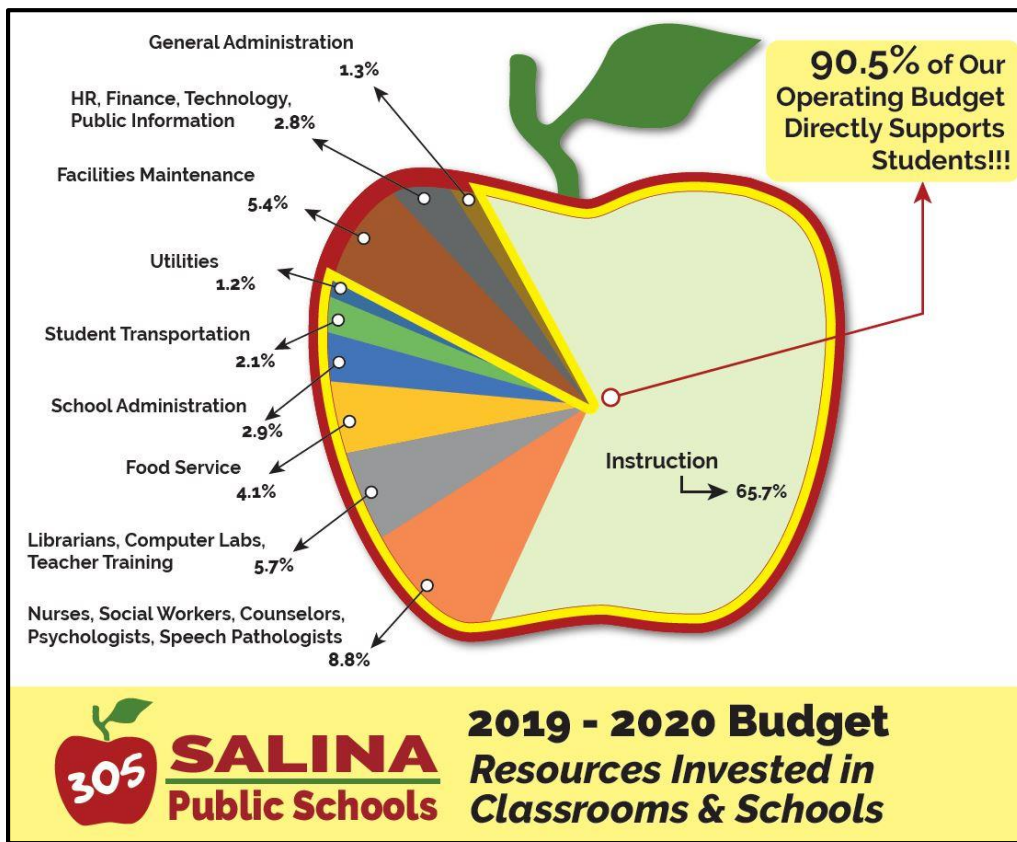


Mission: The mission of the Salina Public Schools is to ensure that all students learn the skills necessary to participate successfully in the communities in which they live. Completion of this mission is a responsibility of the student, family, community, teachers, and staff in a cooperative partnership.

Vision: Meeting the needs of each student in a culture of excellence.

Strategic Plan:

- Provide in a safe and healthy environment a comprehensive curriculum that leads to each student’s academic achievement and personal growth.
- Develop an organization committed to continuous improvement through innovation and best practice.
- Engage families, businesses and the larger community actively at all levels of the organization.



K-12 Enrollment

6,959 students, 60.5% Free & Reduced Lunch Eligible

K-12 Schools

- 8 Elementary Schools
- 2 Middle Schools
- 2 High Schools

Employment

- 2,075 Staff
- *733 Certified Staff
- *958 Classified Staff
- *42 Administrators
- *224 Substitutes
- *118 Various (summer/seasonal help, Rule 10 coaches, SAEC staff, Heartland part-year)
- *640+ volunteers

District Highlights

\$110 Million School Bond Completed in 2018

- All Buildings: Safety and security upgrades, controlled entryways and tornado shelters.
- Elementary Schools: New classrooms and all-day Kindergarten.
- Middle Schools: Gym improvements at South Middle for equity.
- High Schools: Career and technical programs, improved student-centered spaces at South and Central HS, new auxiliary gyms, new and remodeled classrooms, structural improvements at South HS.

Kansans Can and KESA

- Social-Emotional Growth: Increased resources and counselor supports, mental health partnerships and middle school summer school.
- Kindergarten Readiness: Kindergarten student screening, Head Start gradually changing to school day school year classrooms and an added classroom at Oakdale transitioning to Kindergarten.
- Individual Plan of Study (IPS): Eighth graders explore interests and career fields, high school students continue with Career Pathways.

District Equity Council
100+ Partnerships

Programs Sponsored by Salina USD 305:

<p>Heartland Early Education/Head Start This multi-county program serves children birth through age five and their parents, partnering with other social service agencies to provide support and opportunities. Funding sources include Parents Education Program, Early Head Start/Head Start and State Pre-K.</p>	<p>Central Kansas Cooperative in Education CKCIE is a special education cooperative for 12 school districts providing special education support services to public schools.</p>
<p style="text-align: center;">Salina Adult Education Center</p> <p>This program provides adult basic education, English as a second language support, GED® preparation and testing as well as college skill building for people 16 or older and out of school. SAEC operates a diploma completion program for adults to meet requirements and earn a Central or South High School diploma. An intensive employment course called Partners 4 Success was developed by SAEC and is run in collaboration with Salina area agencies and employers.</p>	

Connect with us!

YouTube: USD305
 Facebook: USD305
 Twitter: USD305
 Instagram: USD305
 LinkedIn: Salina USD 305
 Mobile App: Salina Public Schools
 USD 305 Focus Newsletter: Sign Up at usd305.com

Unified School District #305 does not discriminate on the basis of race, color, national origin, sex, age, or disability in admission or access to, or treatment or employment in, its programs and activities and provides equal access to the Boy Scouts and other designated youth groups. Any person having inquiries concerning Unified School District #305 compliance with the regulations implementing Title VI, ADA, Title IX, or Section 504 is directed to contact the Unified School District #305 Executive Director of Human Resources, P.O. Box 797, Salina, Kansas 67402, 785-309-4726.

Salina USD 305
 1511 Gypsum (temporary relocation: 501 W. Cloud)
 Salina, Kansas 67401
 Phone: 785.309.4700